



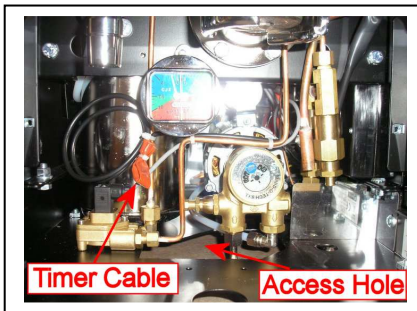
S1 Vivaldi Timer Installation Instructions

Warning: Before installing the timer it is very important that you unplug the machine from the outlet and allow the machine sufficient time to cool off. Failure to follow this warning can result in electrical shock and or burns. La Spaziale and it's distributors assume no liability for injury or damage caused for failure to follow this warning.



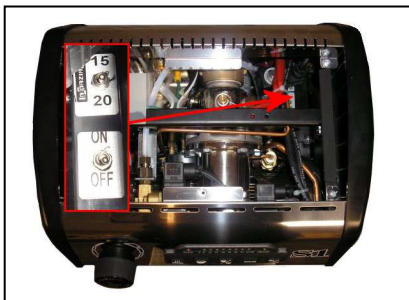
Step 1 - Remove the top plastic cup guard and then unscrew the recessed phillips screw labeled 1 and then pull the top cup warming tray off.

Step 2 - Remove the two phillips screws labeled 2 and then remove the stainless steel splash panel.

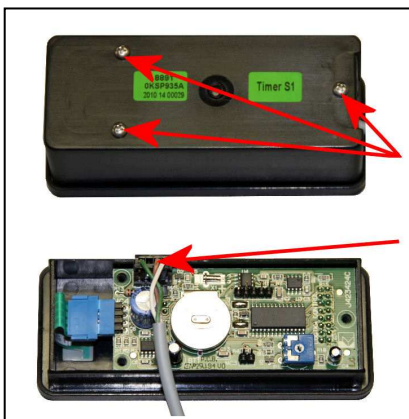


Step 3 - Cut the zip tie holding the timer cable in place and then route the cable through the access hole in the bottom of the machine.

Step 4 - Remove the orange protective sheath that is covering the cable connector and then install the stainless steel splash panel back on to the machine.



Step 5 - In the back right corner of the machine is a black plastic box with two toggle switches. Turn the on/off switch to the "on" position and then install the top cup warming tray and cup guard back on to the machine.



Step 6 - Remove the three phillips screws on the back of the timer and then open it up.

Step 7 - Remove the timer cable shown in the picture and then attach the cable from the machine to the same spot you removed the timer cable from. (You will not need the cable that came with the timer, but it's a good idea to keep as a spare)

Step 8 - Use the 3 screws to put the timer back together and installation is complete. Please refer to the owners manual for programming instructions.

Warning: The timer should be kept off to the side of the machine in a cool and dry location or damage may occur.